

# Promoção de Carpetes

**atec**® Original Design + CarpetsInter®

## Alto tráfego

Fibra 100% **Solution Dyed Nylon**

Base primária **Non Woven Polyester Spunbonded**

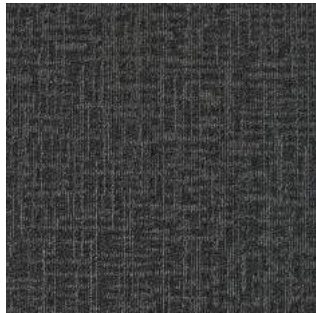
Base secundária **EcoSquare, Reinforced Recycled Backing**

Placa: 50cm x 50cm

Régua: 25cm x 100cm

Todos os carpetes

# R\$ 100,00/m<sup>2</sup>



Slate AA03



Lava AA10



## Apex

**Dimensões:** 50x50cm

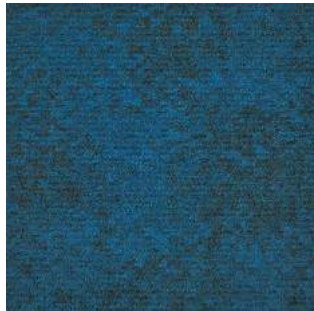
**Peso do fio:** 644 g/m<sup>2</sup>

**Fibra:** Nylon

**Base:** Ecosquare



Air Shuttle IO14



Easy Pass IO17



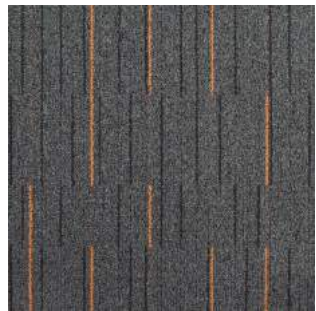
## On Board II

**Dimensões:** 50x50cm

**Peso do fio:** 542 g/m<sup>2</sup>

**Fibra:** Nylon

**Base:** Ecosquare



Meld SZ01



Mixture SZ04



## Zipline

**Dimensões:** 50x50cm

**Peso do fio:** 544 g/m<sup>2</sup>

**Fibra:** Nylon

**Base:** Ecosquare



Catur SK04



Ashta Sk08



## Sanskrit Plus

**Dimensões:** 50x50cm

**Peso do fio:** 544 g/m<sup>2</sup>

**Fibra:** Nylon

**Base:** Ecosquare

Certificações



# Promoção de Carpetes

**atec**® Original Design + CarpetsInter®

## Alto tráfego

Fibra 100% **Solution Dyed Nylon**

Base primária **Non Woven Polyester Spunbonded**

Base secundária **EcoSquare, Reinforced Recycled Backing**

Placa: 50cm x 50cm

Régua: 25cm x 100cm

Todos os carpetes

# R\$ 100,00/m<sup>2</sup>



Key CN01



Volume CN04



Harmony CN08



## Color Tone & Color Duet

**Dimensões:** 50x50cm

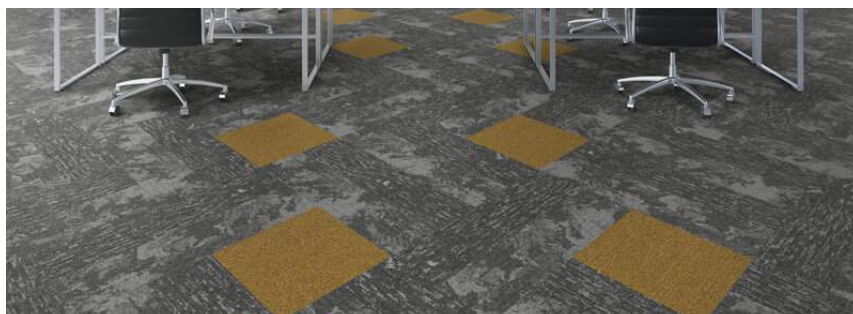
**Peso do fio:** 542 g/m<sup>2</sup>

**Fibra:** Nylon

**Base:** Ecosquare



Lantoto FL11



## Flatlands

**Dimensões:** 50x50cm

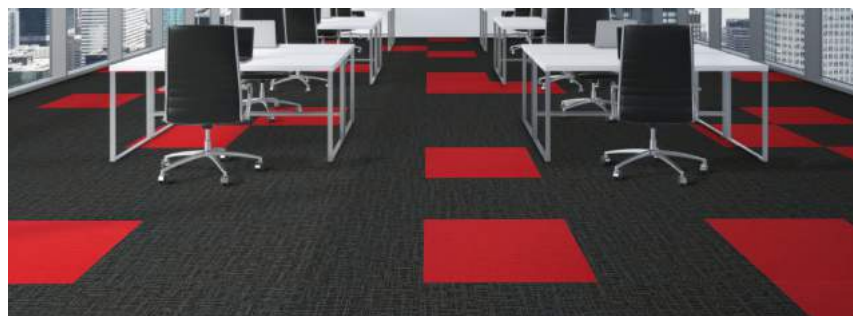
**Peso do fio:** 395 g/m<sup>2</sup>

**Fibra:** Nylon

**Base:** Ecosquare



Sonata SM12



## Color Symphony

**Dimensões:** 50x50cm

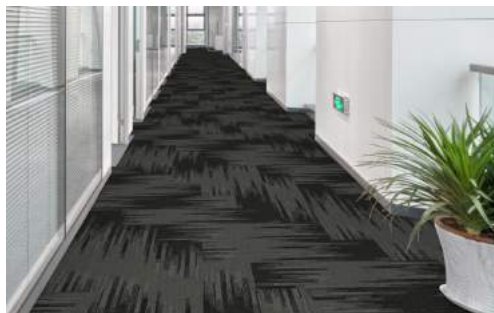
**Peso do fio:** 395 g/m<sup>2</sup>

**Fibra:** Nylon

**Base:** Ecosquare



Slate RW07



## Runway

**Dimensões:** 100x25 cm

**Peso do fio:** 678 g/m<sup>2</sup>

**Fibra:** Nylon

**Base:** Ecosquare

Certificações



# Promoção de Carpetes

**atec**® Original Design + CarpetsInter®

## Alto tráfego

Fibra 100% **Solution Dyed Nylon**

Base primária **Non Woven Polyester Spunbonded**

Base secundária **EcoSquare, Reinforced Recycled Backing**

Placa: 50cm x 50cm

Régua: 25cm x 100cm

Todos os carpetes

# R\$ 100,00/m<sup>2</sup>



**Ice Floe OC01**



**Grey Seal OC05**



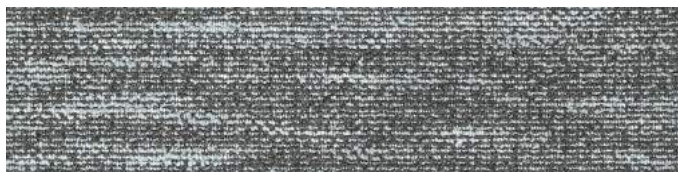
## Over the Ocean

**Dimensões:** 100x25 cm

**Peso do fio:** 395 g/m<sup>2</sup>

**Fibra:** Nylon

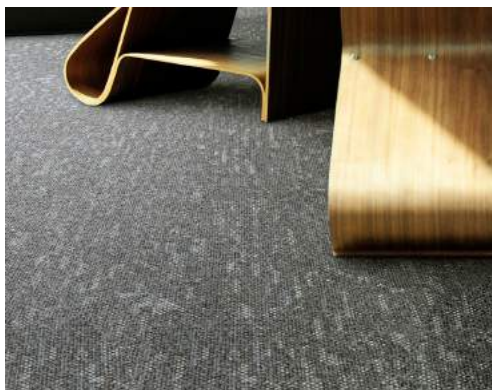
**Base:** Ecosquare



**Ice Floe SE01**



**Grey Seal SE05**



## Across the Sea

**Dimensões:** 100x25 cm

**Peso do fio:** 410 g/m<sup>2</sup>

**Fibra:** Nylon

**Base:** Ecosquare



**Ruma MS09**



## Mesa

**Dimensões:** 100x25 cm

**Peso do fio:** 475 g/m<sup>2</sup>

**Fibra:** Nylon

**Base:** Ecosquare

### Certificações

